



# IP Snipper

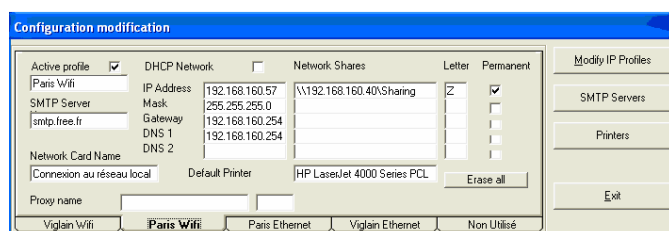
## IP Snipper

### Your all-in-one network configuration tool

Mobility is now a major asset in computer networks.

People move and carry with them their tools. Their laptop now follows them everywhere.

Yet connecting to different networks located at the office, at home, at friends, using Wifi and/or a cable, has become more and more difficult and forces the users to keep reconfiguring their machine to be able to access the local network, Internet, check your emails, browse their favourite sites, MSN, Facebook...



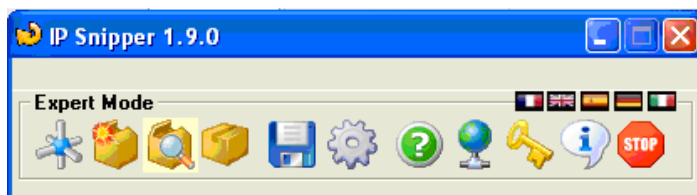
The parameters taken into account in **ONE** click by **IP Snipper** are:

- Wired network card or wireless
- TCP-IP address (fix or DHCP)
- Network mask and default gateway
- Quick DHCP mode in One click
- DNS servers TCP/IP addresses
- SMTP server name for your email profiles
- Name(s) and sharing of network drive(s)
- Permanent (or not) Sharing of drive(s)
- Default printer
- Proxy name
- Proxy's TCP Port

Being a tool linked to mobility, **IP Snipper** comes with a multi-language interface (English, French, German, Italian and Spanish) which can be changed dynamically. **IP Snipper's** user-friendly interface also allows you to create your own icons within the interface, save your startup settings, store your known network parameters, change the size of your icons, check if an update is available, etc...

Download of **IP Snipper** is available on : <http://www.afsoftware.fr/download/ipsnipper.zip>

**IP Snipper** is protected by Copyright laws. Please check the right to use **IP Snipper** before installing.



Multiple Configurations become a real obstacle.

With **IP Snipper** you can reconfigure your network settings just with **ONE** mouse click... No need to browse through the Windows\* settings ; you choose the profile defined in **IP Snipper** and the computer set up will be done automatically.

Thanks to the friendly graphical interface of **IP Snipper**, you can define in no time your individual setups according to the environment (home, office, friends, wired network, wireless, proxy, printer, smtp ...)

Depending on your ISP, Internet following parameters should be systematically changed so that your computer connects to the Internet.

- Wired network card or wireless
- TCP-IP parameters (address, mask, gateway, DNS servers) either in « fixed address » or DHCP mode
- SMTP server name for outgoing email
- Name and TCP port of the proxy server, if necessary

These settings are often complicated and not very intuitive.

With **IP Snipper** and with a **single** mouse click, you choose the profile according to the environment and **IP Snipper** restores your settings directly.



Web Site : <http://www.ipsnipper.com>

E-Mail : [info@ipsnipper.com](mailto:info@ipsnipper.com)



# IP Snipper



# IP Snipper